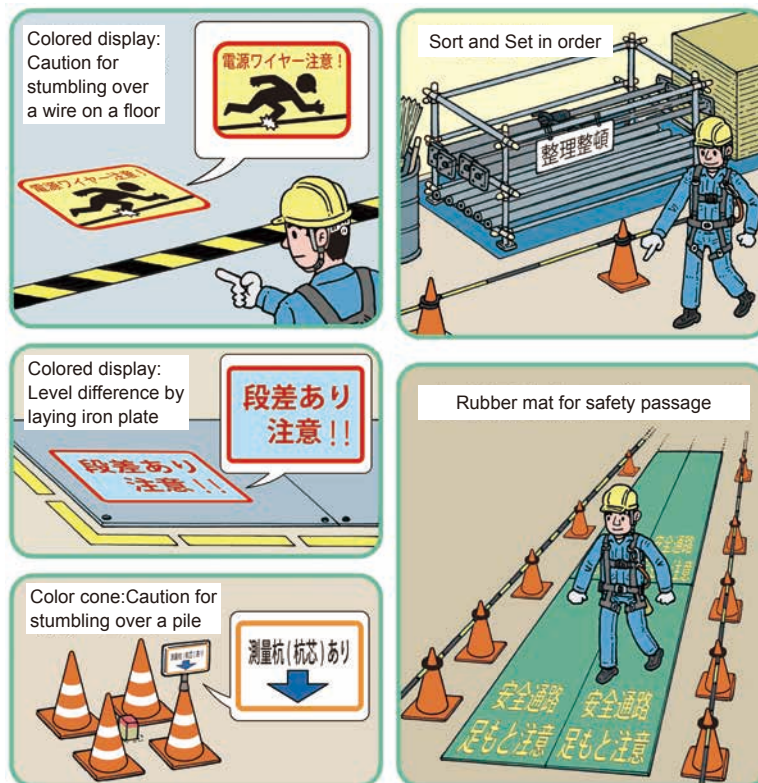


# “Formwork construction”

The important points for Safety and health

## Falling preventing device (scaffolding, etc.)

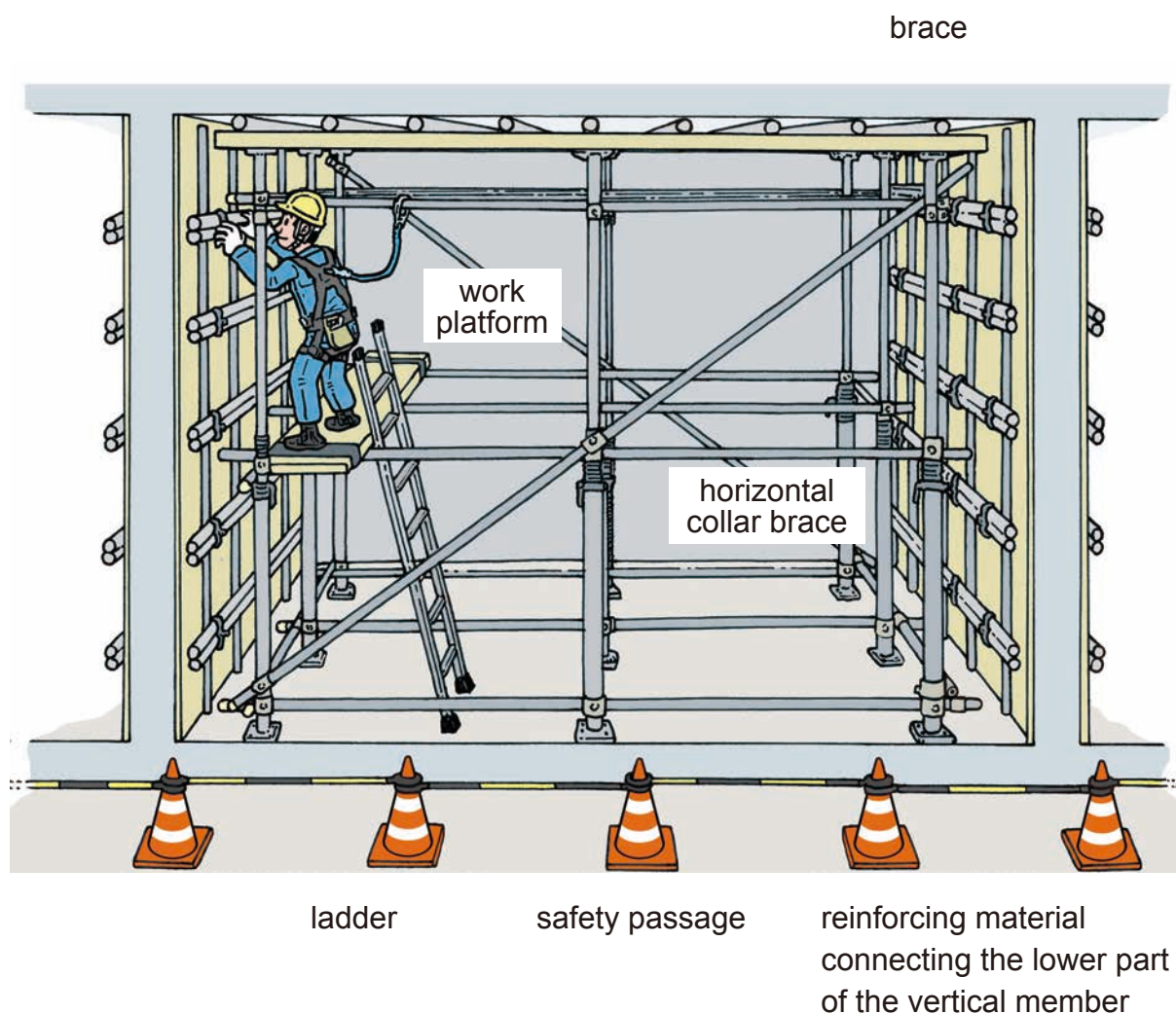
### (1) Work platform



### Matters to pay attention

1. Let's prevent stumbling by the warning statements for the ground wiring and providing a cover.
2. Always keep things organized in a workplace
3. Let's attract attention by coloring the edges of a small step such as a planking.
4. Let's display safety passages with the section or mats and colors.
5. Let's divide and display the material temporary storage place and the work area with color cones, etc.

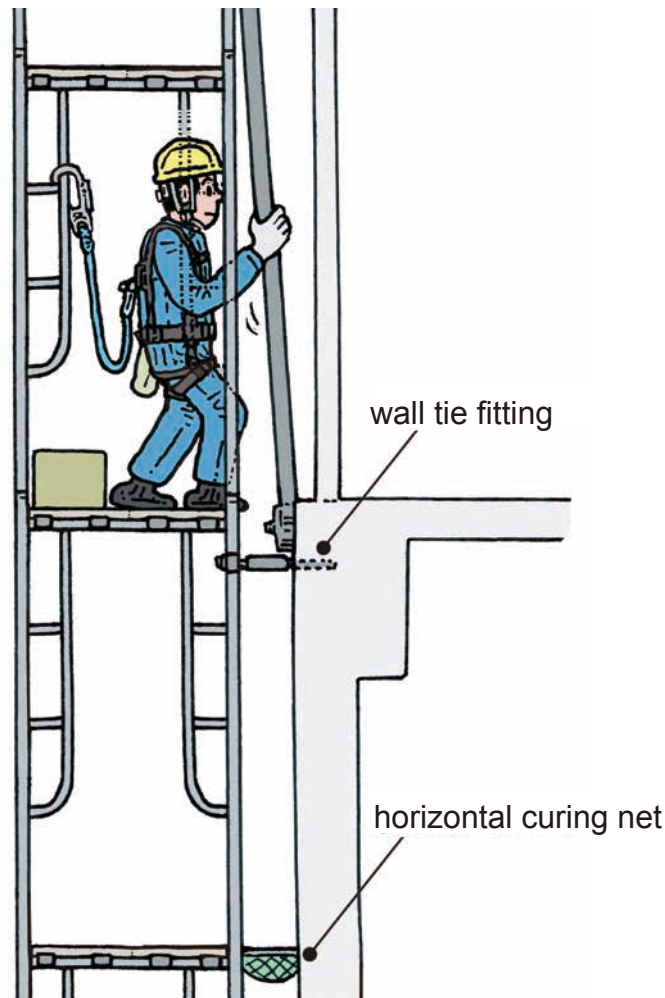
## (2) Basics of formwork support



### Matters to pay attention

1. Install the horizontal collar brace in two directions (X, Y).
2. Clamp the horizontal collar brace.
3. The work platform is used by binding.
4. The temporary lift facility must be fixed before use.
5. Let's use the personal fall arrest systems (fall prevention harness) at the work in a high place.

### (3) Assembling of panel formwork for external walls

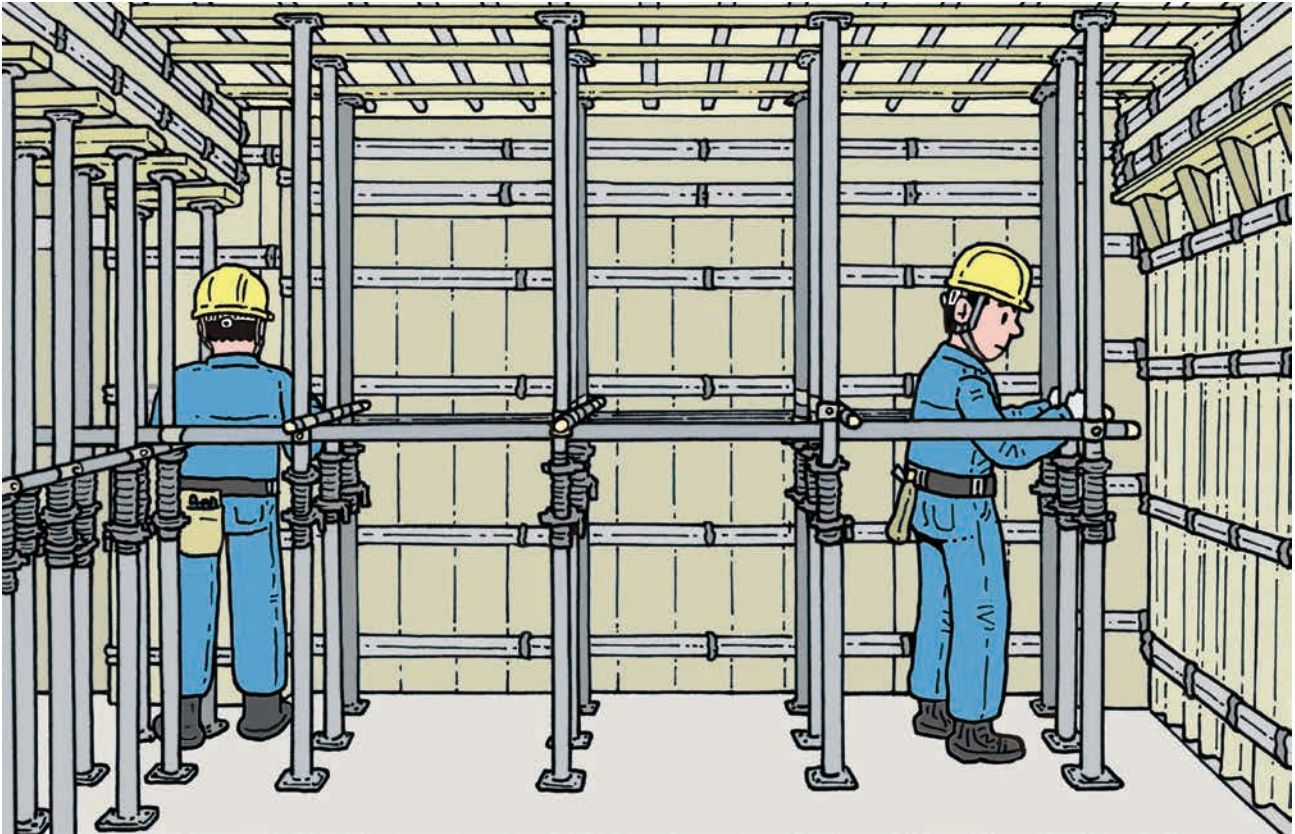


#### Matters to pay attention

1. Let's use the personal fall arrest systems (fall prevention harness).
2. Let's take measures of the entry prohibition under the work place.
3. Let's confirm that there is a horizontal curing net one floor below.
4. Let's check wall tie fittings for the scaffold.
5. Do not work in the strong wind as the panel may be blown by the wind.
6. Let's put small items in a container bag, etc. to prevent falling.



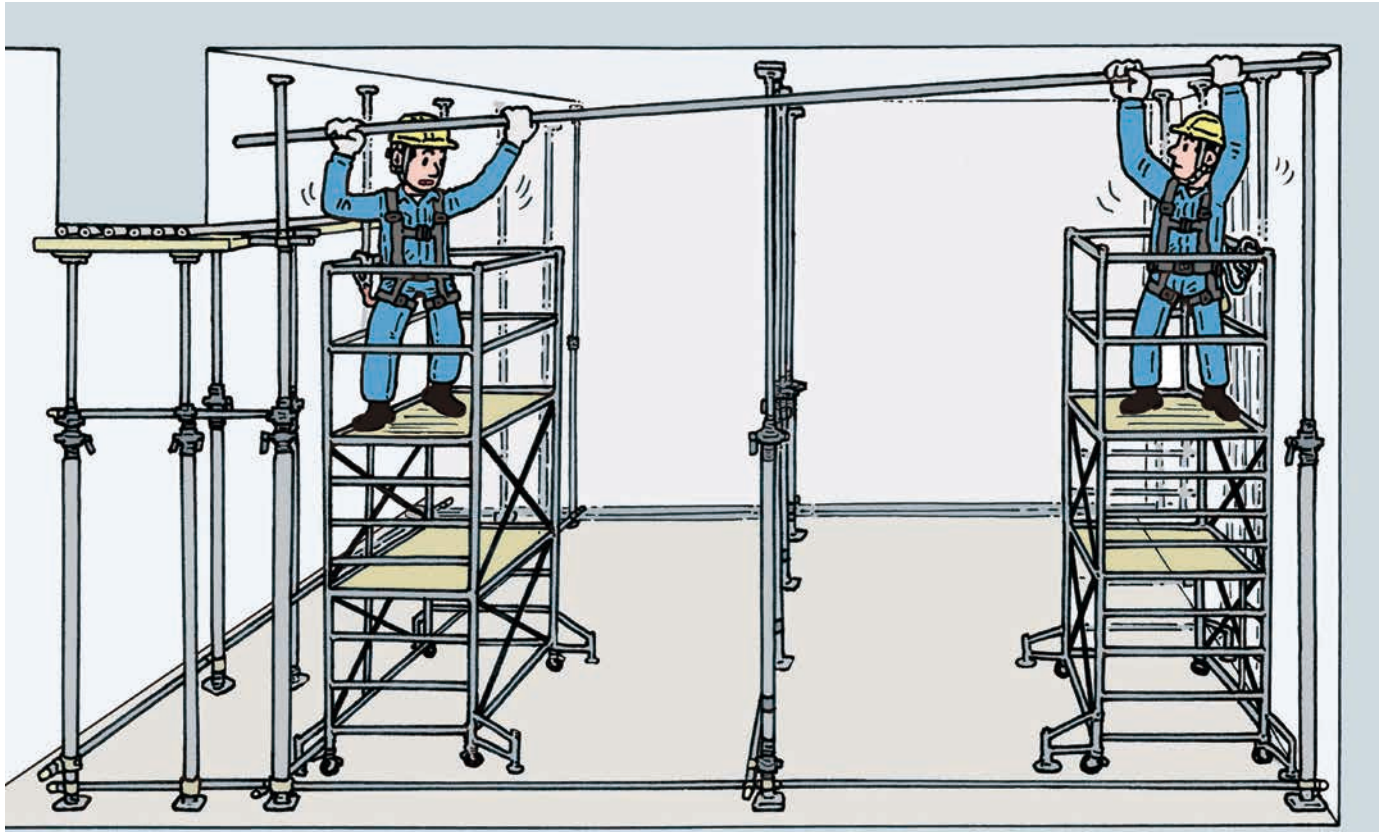
## (4) Horizontal collar braces for the slab formwork



### Matters to pay attention

1. In order to prevent collapse of the formwork support, horizontal collar braces are provided to connect the two directions of the support.
2. Let's check whether the intervals are the same as the assembly drawing developed in advance.
3. Let's call out to each other and work to prevent pipes from falling.
4. The reinforcing materials connecting the lower part of the vertical members are fastened with clumps. One should not rest on these.

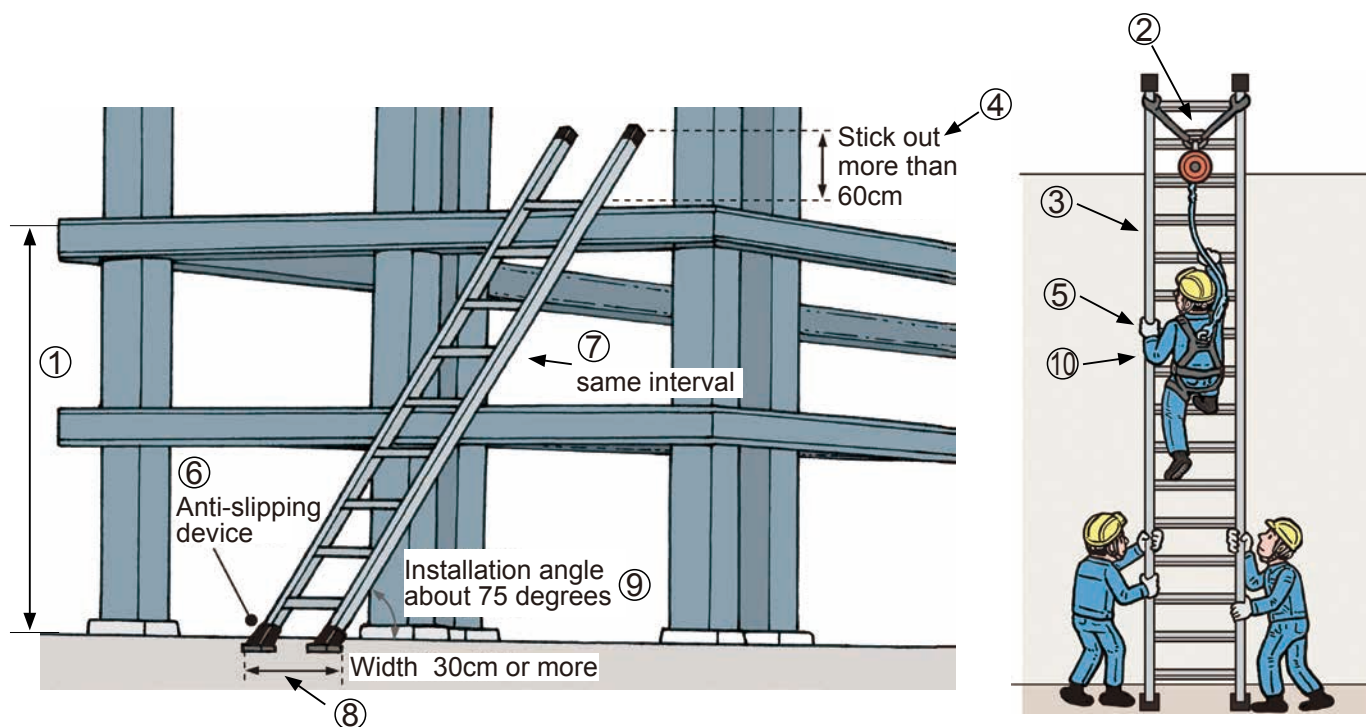
## (5) Dismantling of formwork supports



### Matters to pay attention

1. Let's follow the predetermined order of dismantling.
2. Do not place any materials on the scaffold.
3. Let's use stepladder, portable work platform, aerial work vehicle appropriately.
4. When the height exceeds 2m, let's hang the hook of the personal fall arrest systems (all prevention harness) above the height of the waist and use it.
5. Let's display "prohibited off-limits" around you and prevent people from entering.
6. Do not work alone, let's work with two or more people.

## (6) Movable Ladder

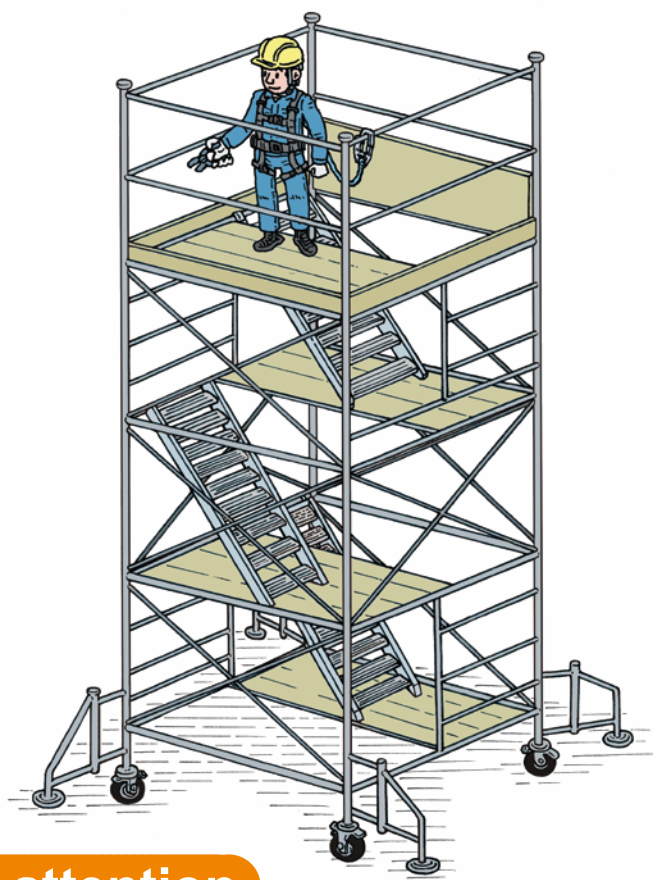


### Matters to pay attention

1. When it exceeds 1.5m in height and depth, install a safe lifting facility.
2. Use safety line and the personal fall arrest systems (fall prevention harness) when there is a risk of crash.
3. When use a ladder use it in a stable place.
4. Let the top of the ladder protrude more than 60mm.
5. Do not carry out a reaction work on the ladder.
6. Use a ladder with non-slip rubber.
7. Let's install tread bars at equal intervals.
8. Use a ladder with a width of 30cm or more.
9. Let's set the installation angle to about 75°.
10. Let's go up and down without holding an object.



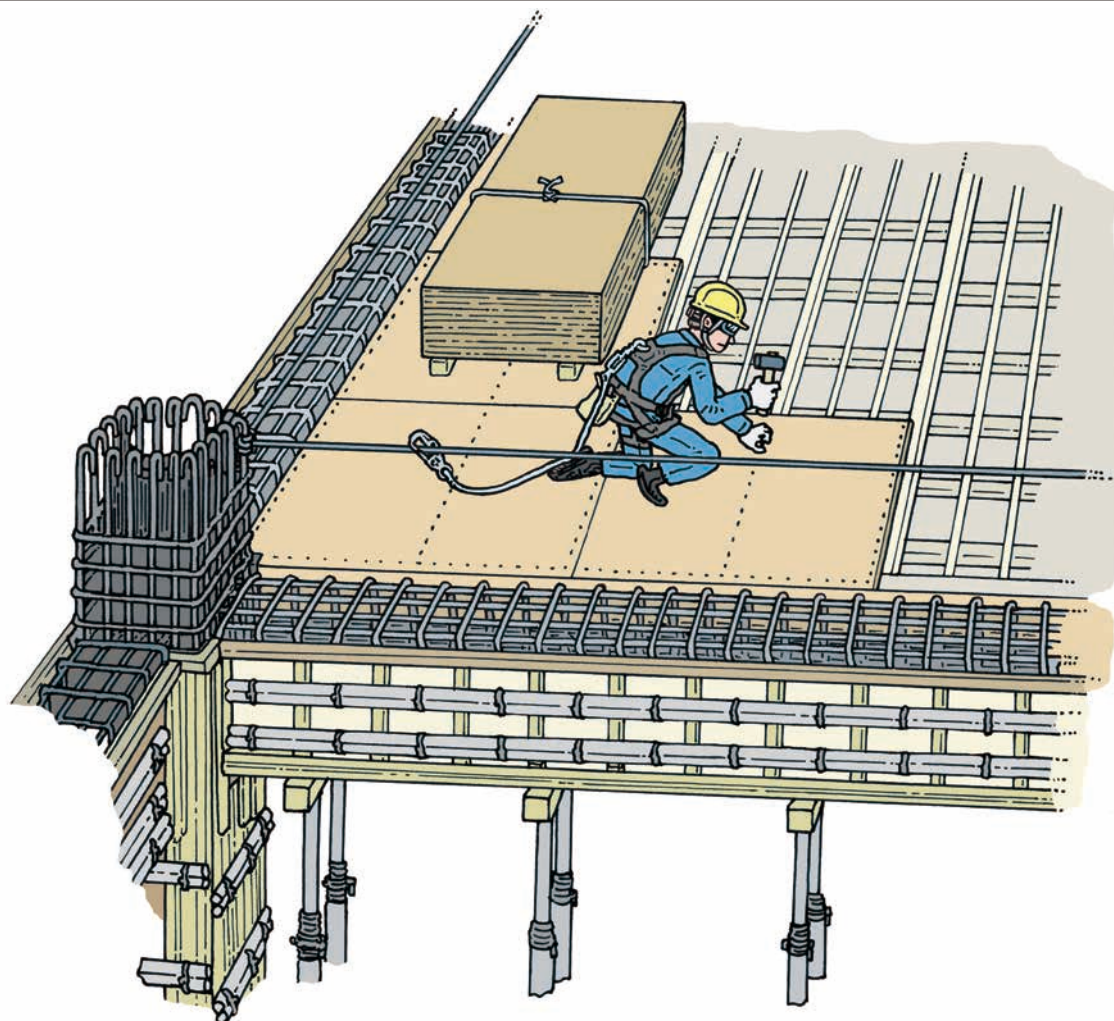
## (7) Rolling tower



### Matters to pay attention

1. Let's use the personal fall arrest systems (fall prevention harness).
2. Let's use a rolling tower that has the raising and lowering equipment.
3. Let's go up and down without holding objects.
4. Let's use a rolling tower that has caster brakes on four wheels.
5. Let's install outriggers correctly.
6. Don't move a rolling tower with people on it.
7. Let's use below the height limit.
8. Let's display the person in charge.
9. Let's display loaded load.
10. Do not use a stepladder, etc. on the work platform.
11. Use a rolling tower with handrails which height is 85mm or more.

## (8) Works on a slab



### Matters to pay attention

1. Let's work according to the instructions of an operation chief (operation chief of formwork support).
2. Always use a lifting equipment to go to the slab.
3. Let's use the personal fall arrest systems (full fall prevention harness).
4. During work, let's invoke the entry prohibition into the lower part.
5. Let's put a safety line at the end of the slab.
6. Let's work forward-looking, not back-facing.
7. Every time, let's tie materials on the slab form.