

“Plastering and interior finishing work”

The important points for Safety and health

Measures against asbestos in buildings

(1) What is asbestos?

Asbestos is a type of naturally produced mineral.

Asbestos has been used for various purposes because of its properties such as resistance to heat and friction, and a large quantity has been used especially for building materials.

Steel frame fireproof coating



Used for steel frame fire resistance

Attic



Prevents dew condensation on the attic, used for thermal insulation
Texture of felt

Ceiling board



Used for sound absorption
Rock wool containing asbestos

(2) Health disorders due to asbestos

Regarding the harm to a human body, inhalation of asbestos dust may cause following health problems.

- Asbestosis (a type of pneumoconiosis)

The asbestosis is the pulmonary fibrosis and have symptoms such as coughs, it causes the decreased respiratory function if exacerbated.

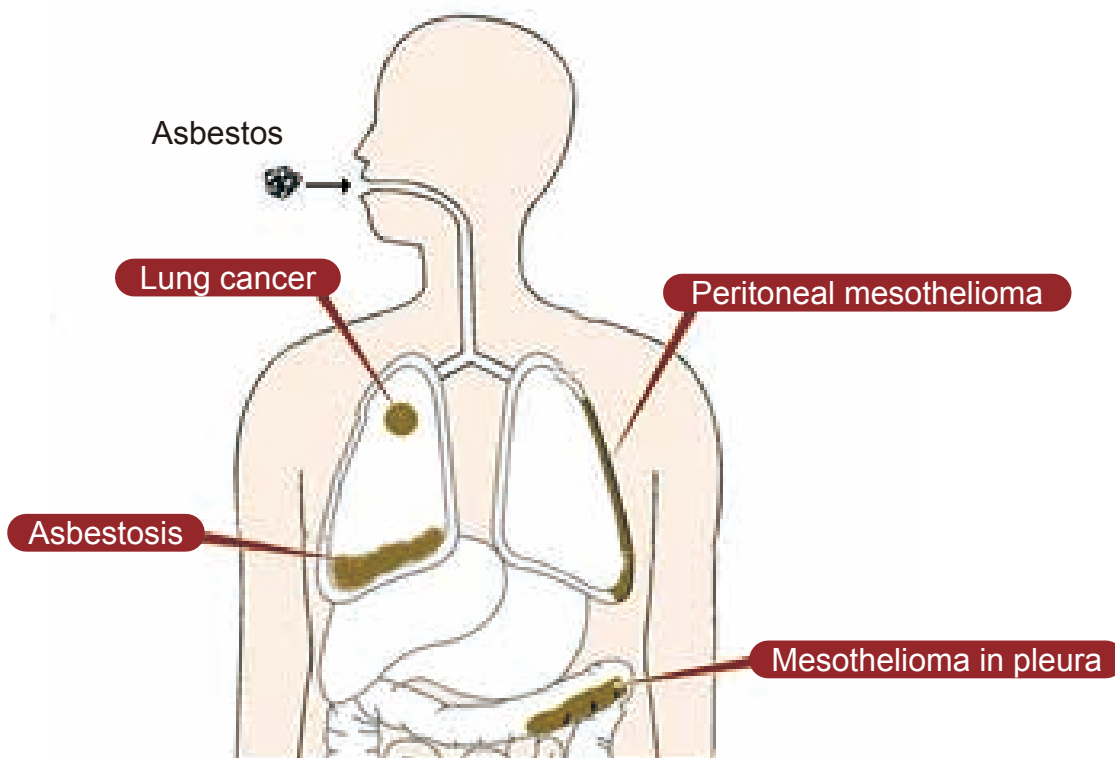
- Lung cancer

Malignant tumors that affect or grow in the lungs.

- Mesothelioma in the pleura or the peritoneum (a type of cancer)

Malignant tumors grown in the pleura that covers the lungs.

Major diseases caused by asbestos



(3) Asbestos around us

There are many buildings where asbestos is used, especially in buildings built before 1980, and buildings with cooking rooms, bathrooms, drying rooms, boiler rooms, etc.

<Examples of building component>

ceiling/wall: interior materials	slate board, calcium silicate board Class 1, pulp cement flat sheet
ceiling/floor: Sound absorbing heat insulating materials	asbestos contained rock wool sound absorbing ceiling board
floor materials:	polyvinyl chloride floor tile, floor materials
exterior wall/eave: cladding	extrusion-molded cement panel, ceramic siding, slag gypsum board, slate board, wavy slate plate, calcium silicate board Class 1, slate board
roof materials:	wavy slate plate, decorative slate sheet for housing roof

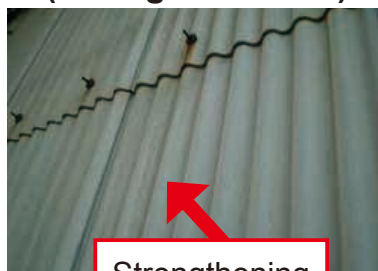
Images of asbestos usage in buildings

Steel frame fireproof coating



For steel frame fire resistance

Exterior wall material (corrugated sheet)



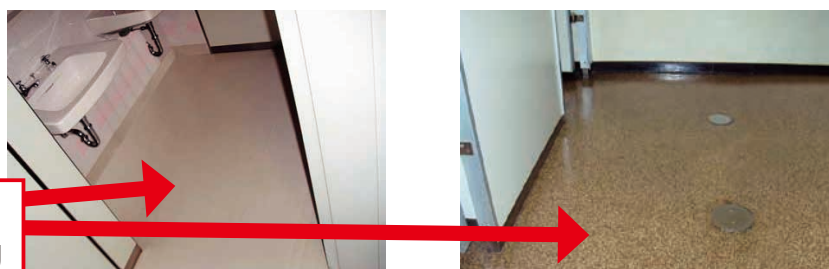
Strengthening of outer wall

Plumbing elbow



For insulation of piping

Water floor material



For floor waterproofing

(4) Work methods (prevention of dust emission)

<Dismantling by hands>

Asbestos-containing molded plates are removed by a method that does not cause destruction or rupture as much as possible. In principle, they are removed by hands maintaining the original form. If this is not possible, it is necessary to wet enough and to collect dust by using a high-performance vacuum cleaner.



<Wetting>

Generally, the work is carried out while wetting with watering or spraying chemicals.



(5) Taking of the special education and the instruction by an operation chief of asbestos**<Taking of the special education>**

People engaged in construction works such as demolition and renovation of buildings and structures, or asbestos containment and enclosure works must have the special education on the harm of asbestos and use of protective equipment.

**<The instruction by an operation chief of asbestos>**

People engaged in construction works such as dismantling and renovation of buildings and structures, as well as in asbestos containment and enclosure works, must work in accordance with the instruction of an operation chief of asbestos, so that they are not contaminated by asbestos dust or inhaled.

(6) Use of protective equipment

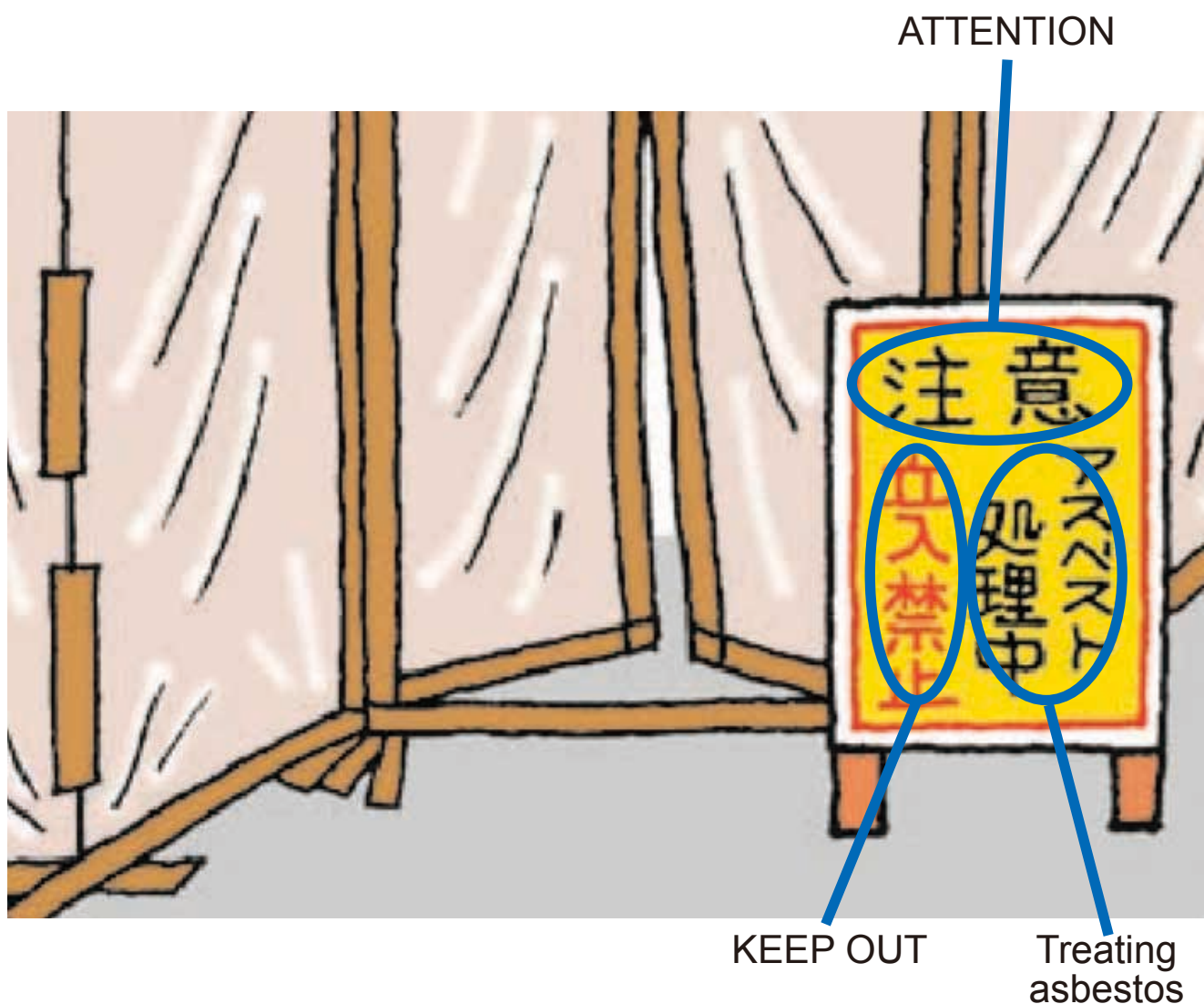
When performing works such as dismantling a building (including a work to remove asbestos), or infill or enclosure works, use a respiratory protective equipment (dust respirators, air feeding masks, etc.), working clothes or protective clothing.

When removing asbestos sprayed in an isolated work area, a respirator should be a respiration protector with an electric fan or a respirator with the performance equal to or more.



(7) Prohibition of unauthorized persons

Workplaces where handling asbestos are prohibited from entering by persons other than those involved, and signs are displayed at visible places.



(8) Prohibition of smoking, etc. and medical examinations

<Prohibition of smoking, etc.>

Smoking, eating, and drinking are prohibited in work places where asbestos is handled.



<Implementation of health checks>

Persons who are constantly engaged in works where asbestos dust is produced must receive regularly a special health check of asbestos just after or within every six months when employed or relocated.

